

ADDENDUM NO. 2

**YOLO OF DARKE COUNTY, INC.
Greenville Downtown Urban Park
June 14, 2018**

To: Planholders

From: Mote & Associates, Inc.
214 West Fourth Street
Greenville, Ohio 45331

Phone: (937) 548-7511
Fax: (937) 548-7484
E-mail: info@moteassociates.com

Re: YOLO of Darke County, Inc.
Greenville Downtown Urban Park

This Addendum forms a part of the Contract Documents and modifies the original Contract Documents dated May, 2018 and Addendum No. 1 dated June 7, 2018. Acknowledge receipt of this Addendum in the space provided on the Bid Proposal form. Failure to do so may subject the Bidder to disqualification.

CHANGES/CLARIFICATIONS TO THE TECHNICAL SPECIFICATIONS:

1. Section 32 21 00 – Vitriturf Multi-E Surface

The attached technical specification and Details for nozzles and drain, shall be added to the Contract Documents for use with the surface shown on Sheet 21 of 25. The 9'-4" radius is the area of application for this product. All materials, labor, equipment, and incidentals for the installation per the manufacturer's installation instructions shall be included in the Base Bid.

CHANGES/CLARIFICATIONS TO THE CONSTRUCTION PLANS:

2. PLAN SHEET #23 of 25 – Lighting Plan

Attached is the electric panel layout to be added to Sheet #23 of 25 (Lighting Plan).

GENERAL CLARIFICATIONS:

3. No asphalt shall be installed after November 1, 2018 unless approved by the Engineer based on weather conditions. Since the Base Bid has a completion date of November 1, 2018, this condition will only apply to Alternate Bid #2 which has a completion date of June 1, 2019.

End of Addendum

Attachments: Section 32 21 00, Vitriturf Multi-E Surface along with (nozzle and drain details)
Electric Panel Layout

Specifications

Vitriturf Multi-Surface E System

SECTION 32 21 00

**Poured In Place
Safety Surfacing**

PART I -- GENERAL

1.00 SCOPE: This is a Manufacturer's Specification on the Playground version of the VITRITURF Multi-Surface System.

1.01 DESCRIPTION: Provide all labor, materials and equipment necessary to install the VITRITURF Multi-Surface System.

1.02 QUALITY ASSURANCE

A. Qualifications

1. VITRITURF shall have marketed this system in the United States for at least five years.

2. The Applicator shall be trained and registered by VITRITURF

B. Design and Detailing

1. General

a. VITRITURF Multi-Surface System is utilized wherever an impact, absorbing cushioned surface is required.

Playground areas should meet criteria set by the CPSC.

2. Substrate and Substrate Systems

a. Check with Vitriturf Representative for specific application to existing substrate.

3. Acceptable Substrates for the VITRITURF System include grass, dirt, mulch, sand and compacted stone.

4. Other Substrates shall be approved by VITRITURF prior to application.

5. The Trained Applicator shall verify that the proposed Substrate is acceptable with application of the VITRITURF System.

6. Substrate Systems shall be engineered with regard to structural performance.

7. Follow VITRITURF's published details with specific recommendations for this project.

1.03 SUBMITTALS:

A. Trained Applicator shall submit 6" x 6" 1220mm) samples of the VITRITURF System.

1.04 DELIVERY, STORAGE AND HANDLING

A. Deliver all materials in original unopened packages with labels intact. B. Store all materials protected from weather and at temperature not less than 40 F (4 C).

1.05 JOB CONDITIONS:

A. Ambient air temperature should be 32 F at the time of installation of the VITRITURF System. The System may be installed with temperatures below 40. The temperature only affects the system in workability of the materials and the dry time.

The lower the temperature, the thicker the viscosity of the binder and the dry time may become delayed.

B. The VITRITURF System shall be protected during installation while curing and/or unattended from weather and other damage.

1.06 ALTERNATES AND ALLOWANCES:

A. Systems to be considered equal to those specified herein shall be approved by then Architect, in writing, at least ten working days prior to the project bid date.

PART II -- PRODUCTS

2.01 GENERAL: All components of the VITRITURF System shall be obtained from VITRITURF or its authorized distributors.

No substitutions of, or additions of, other materials shall be submitted without prior written permission from VITRITURF.

2.02 MATERIALS

A. VITRITURF Wire Mesh: A coated welded wire mesh meeting the requirements of the Vitriturf Multi-Surface System.

B. VITRITURF BINDER: A proprietary, elastic Polyurethane Pre-Polymer, MDI based. Extremely low odor, capable of excellent weathering and binding characteristics. Binder shall contain no TDI Monomers.

C. VITRITURF Multi-Surface Base Mat: A blend of recycled post consumer rubber combined to create a stable base.

D. VITRITURF EPDM Rubber: A man-made rubber containing minimum of 30% EPDM and having a density of 1.5-0.05.

1. Is available in assorted colors and available in three sizes: 1-3mm, 0.5-1.5mm and 0.40-08mm (dust)

2.03 MIXING AND PREPARATION: A. Mixture of binder/EPDM or binder/SBR will be determined by the system which is specified.

PART III-- EXECUTION

3.01 INSPECTION:

A. Prior to application of VITRITURF Multi-Surface System the Substrates shall be examined for compliance with the contract documents of VITRITURF specifications. The General Contractor and Architect shall be advised of all discrepancies. Work shall not proceed until unsatisfactory conditions are corrected.

3.02 INSTALLATION:

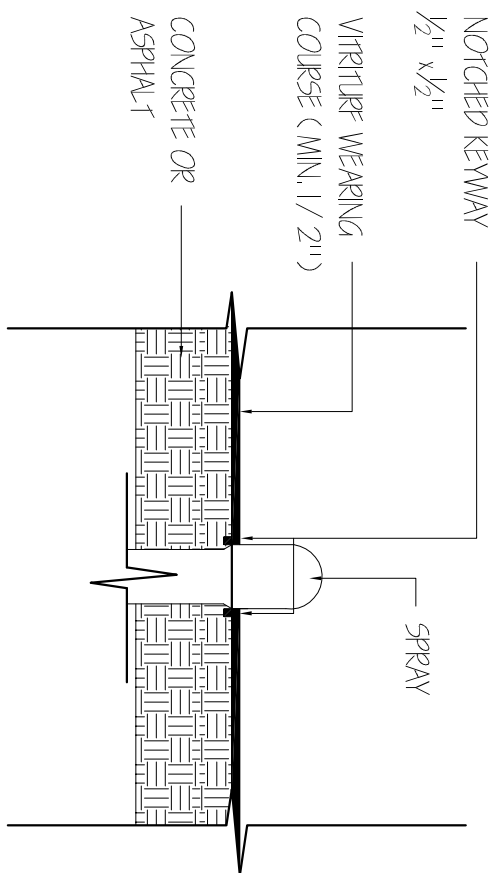
VITRITURF Multi Surface System

1. VITRITURF Wire Mesh: Lay wire mesh over flat ground surfacing.

2. VITRITURF Multi Surface Base Mat: Mix base to binder at ratio of 82/18. Apply to specified thickness.

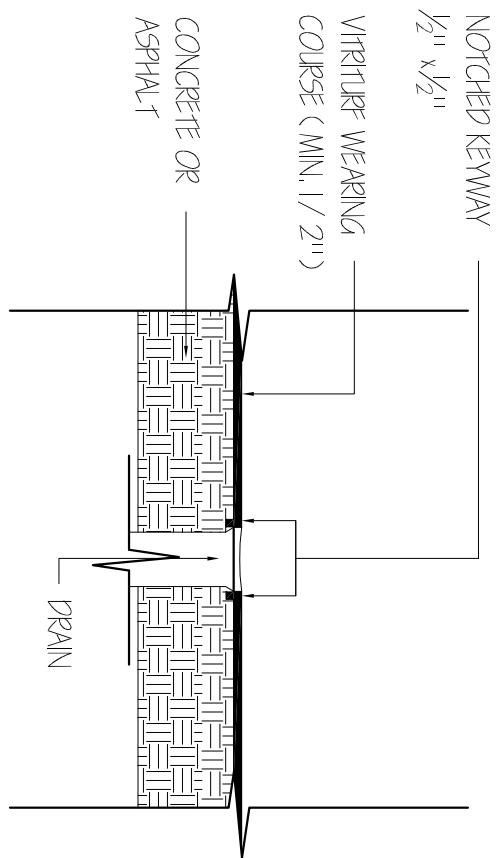
3. VITRITURF EPDM: Mix EPDM to VITRITURF Binder in a ratio of 82/18 and spread evenly at specified thickness.

1. For finishing: Spray a light mist of water on surface and trowel smooth. Apply at a minimum of 1/2".



SPRAY SECTION

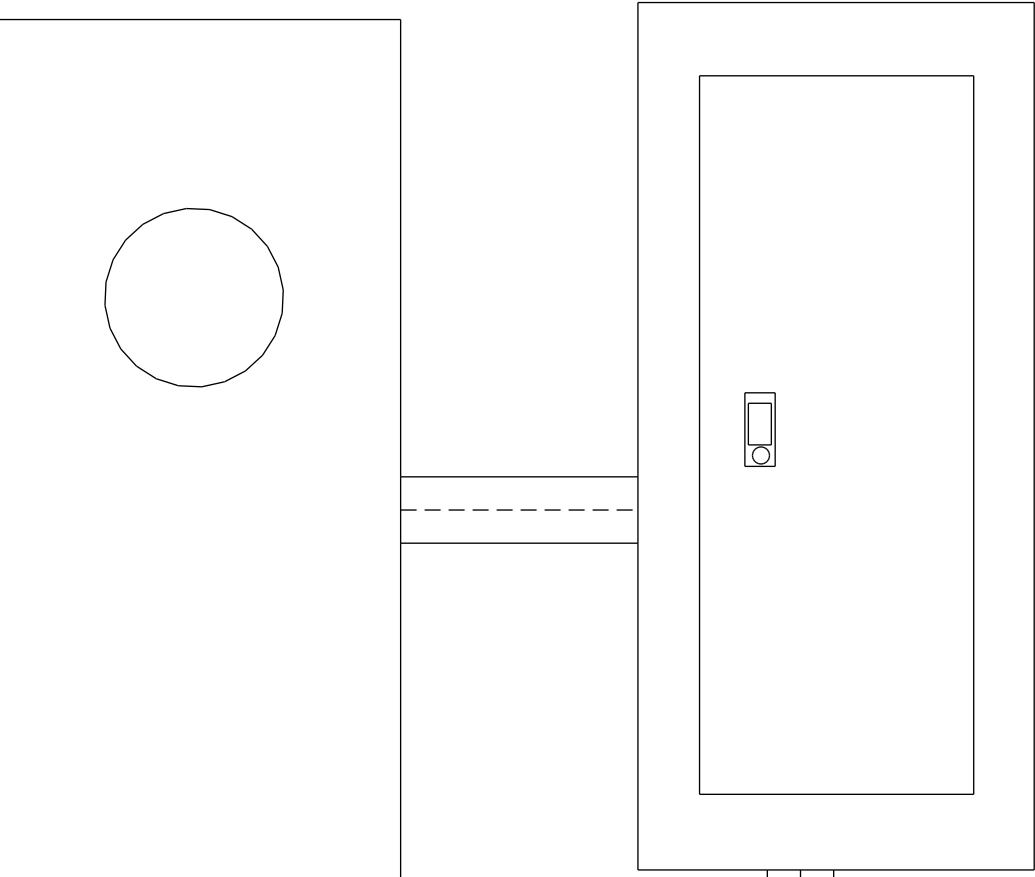
SCALE: 1" = 1'-0"



DRAIN SECTION

SCALE: 1" = 1'-0"

Note: Include Quad outlets
in Open Air Struture
for additional power
for future band events.



Note: 100 amps 240 volt
Single Phase
Main Breaker
Weather Proof Panel Board
20 Circuit Min. Space

Note: All wiring to be in conduit
All work to meet all codes
Provide Photo Cell controller
for all fixtures.

From Utility

Riser